

# Alcyone

Multipurpose Support Vessel

## Features

- 7-point Mooring / 17m Spud Poles
- 120T Crane / Excavator
- Shallow draught operation
- Self-propelled
- ISM, ISPS & MLC Compliant







# Alcyone

The **Alcyone** is a Multi-Purpose Support Vessel specially built for shallow water operations, in light of her very shallow draft. Provided with ample deck space, fitted with a 7 point mooring system, a pair of 17m long spud poles and with a 120t crane complemented by a variety of grabs and auxiliaries, this vessel is ideal for near shore trenching operations, dredging, cable landing assistance, cable jointing operations and any other similar work.

Built in Italy in 2006, under R.I.NA. Class, the vessel was acquired by the Asso Group in October 2018 and registered under the Greek Flag for National and International trading and operation. In 2019 she underwent a major upgrade to better suit her new role in the Group, which also saw her class transferred to ABS.

She holds an extensive track record, on a variety of diverse projects ranging from dredging and anti-pollution to wreck removal under her previous Owners, and is being constantly kept up to date with new equipment and careful maintenance to ensure zero down-time and highest possible performance on her employments.

## General information

IMO Number	9452933
Classification	ABS A1, Mediterranean Sea Service, AMS
Flag	Greece
Built	Italy, 2006
Length Overall	46.70 m
Breadth Moulded	15.00 m (+3m for spuds)
Depth (Main Deck)	3.20 m
Draught (Maximum)	2.40 m
Draught (Min. Operational)	1.43 m
Gross Tonnage	626
Deadweight	875 MT



## Power & Propulsion

Main Engines	2 x Guascor SF180, each 590 BHP
Propulsion	2 x Fixed-pitch 4-blade propellers
Aux. Generators	2 x Iveco-Aifo 8060, each 100 kVA 1 x Volvo Mosa CE225VPS, 275 kVA
Em'cy Generator	Iveco-Aifo 6940, 40 kVA
Bow Thrusters	2 x Tunnel BTX900, each 45 kW



## Anchoring Systems

Anchor Winches	4 x 4.5T Drum Pull, hydraulic 3 x 8.0T Drum Pull, hydraulic
Anchors	4 x 750kg Delta 2 x 1,150kg Delta 1 x 850kg Delta
Anchor wire capacity	7x 320m length, 28mm diameter
Spud Poles	2 x 17m electro-hydraulically operated.



## Excavator Crane

Make / Model	Liebherr HS 895 HD
Maximum capacity	120MT @ 8M Radius
Drag Line	70 m
St. Boom Length	28.70 m
Max. Boom Length	55.10 m
Excavation Buckets	1 x Clamshell, 8.0 m <sup>3</sup> 1 x Orange-peel grapple, 5.0 m <sup>3</sup>



## Survey & Positioning

EIVA NaviSuite	1 x NaviPac UCA online 1 x NaviPac UCA Remote Station
Position Reference Units	1 x DGPS w/ corrections (Vessel) 2 x DGPS w/ corrections (Crane)
Sensors	1 x MRU 2 x Gyro Compass 1 x Wind Sensor 4 x Liebherr Sensors I/O to Survey System





## Deck Capacities

Main Deck Load	abt. 550 MT
Main Deck Area (useable)	abt. 300 m <sup>2</sup>
IMDG Deck Area	abt. 190 m <sup>2</sup>



## Tank Capacities

Fuel (MGO)	abt. 30 MT
Fresh Water	abt. 70 MT (Production 4 T/D)
Ballast Water	abt. 1,200 MT
Sewage	abt. 60 MT



## Accommodation

Total POB	12
Cabins	2 x Single Cabins 1 x Double Cabin 2 x Quad Cabins
1 x Combined Mess Room & Saloon	
1 x Office	



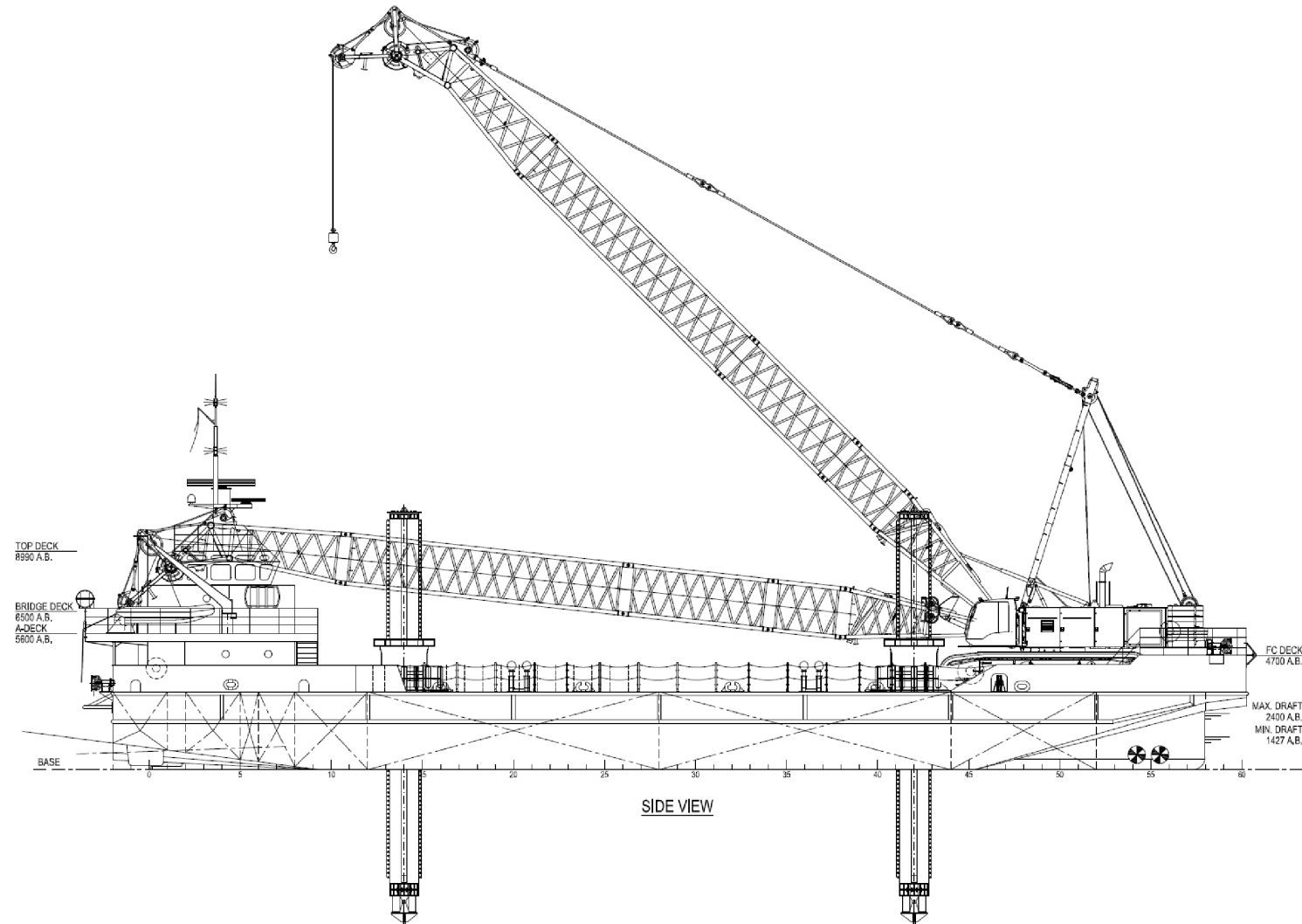
## Life Saving Arrangements

1 x Rescue Boat
Life Saving Appliances for 12 persons - SOLAS
1 x SART
1 x Free Float EPIRB



## Navigation & Communications

1 x Radar
1 x Gyroscopic Compass
1 x Chart Plotter
1 x Echo Sounder
GMDSS Approved Radio System (Areas A1, A2)





## Name “Alcyone”

The Alcyone (/æɪˈsaɪ.əni:/; in Greek: Αλκυόνη) is named after one of the mythological Pleiades, daughters of the titan Atlas and Pleione. According to Greek mythology she was the mother of the fisherman Glaucus, who was later transformed into a sea-god.





## Contact Information

Asso.subsea

### Greece

1 Alieftikis Str., Elefsis 19200,  
Greece

### Contact

T (Direct) : (+30) 211.888.5100 T (Main) : (+30) 211.888.5180  
E. central@assogroup.com

[www.assogroup.com](http://www.assogroup.com)

## Membership - Accreditations



BIMCO

## Disclaimer

The specification details are illustrative for marketing purposes only. Actual equipment may be different as a result of product improvement or other reasons. Specific interface and performance information should be reconfirmed at time of order placement. Specifications are subject to change without any prior notification.

