

Ariadne

Cable Laying Vessel

Features

- DP 3
- 1 x 5,000MT Cable Carousel – above deck
- 1 x 4,000MT Cable Carousel – below deck
- Work Class ROV
- High sea state capability





Ariadne

The **Ariadne** is a DP-3 Cable Laying Vessel built for worldwide subsea operations, specially designed for OWF inter-array and export cable installation, interconnector cable installation and cable protection.

She is an Ulstein SX-121 design, originally built in Norway in 2009 as the Viking Poseidon and was acquired by her current owners in March 2017. Upon delivery, her class was transferred from DnV-GL to ABS in line with company policy.

The vessel has been built to the requirements of DnV-GL Comfort Class (C-3, V-3) and she can accommodate a total of 106 persons in the highest level of comfort.

The vessel has completed her 3rd conversion stage, emerging with a complete and permanent cable laying spread consisting of a 5000MT carousel on deck, a 4,000MT below deck carousel (with a combined capacity of max. 7,000MT), two firing lines with one cable tensioner each, conforming to a cable MBR of 5m and a bight quadrant deployment system. The vessel is also fitted with a Work-class ROV.

General information

IMO Number	9413535
Classification	ABS A1, AMS, HELIDK, ACCU, DPS-3, NBLES, ENVIRO, CRC(I), POT, HAB(WB)
Flag	Greece
Built	Norway, 2009
Length Overall	130.00m
Length BP	122.10m
Breadth Moulded	25.00m
Breadth Extreme	28m
Draught (Max.)	7.80m
Gross Tonnage	Abt. 12,000 (TBC)
Deadweight	Abt. 10,000t (TBC)

Power & Propulsion

Main Generators	4 x MaK9M25, each 2,850kW 2 x MaK9M20C, each 1,530kW
Emergency Gen.	Scania DI1262M
Main Propulsion	2 x AZP120CP, each 3,500kW
Bow Thrusters	2 x Tunnel, each 1,800kW 1 x Azimuthing 1,500kW
Stern Thrusters	1 x Azimuthing 1,800kW

Performance

Max Speed	abt. 14.5kn
Consumption on Max Speed	abt. 35T/D
Economic Speed	abt. 11.0kn
Consumption on Econ. Speed	abt. 25T/D
Port Consumption	abt. 3T/D

D.P. System

Maker	Kongsberg Maritime
Type	KPos 21 & 11 with C-Joy (DP-3)
ERN Number	99,99,99
Sensors	3 x Gyro Compass 1 x FOG KM MGC R3 1 x Kongsberg Seapath 380 2 x MRU 5 3 x Wind Sensors
Position Reference Units	3 x DGPS with Sat. Corrections 2 x Kongsberg HiPAP-501 1 x MDL Laser Fanbeam

Survey Systems

EIVA NaviSuite	1 x NaviPac, NaviScan online 1 x NaviModel, NaviEdit 5 x NaviPac Remote Stations
Time	1 x ATTU (Accurate Time Tagging) 1 x PPS Distributor
Network	2 x Moxa Nports Fiber Optics, Lan & Serial connections through all Stations



Cable Handling

Turntables	1 x 5,000MT (26m OD / min 5 m ID) 1 x 4,000MT (18,07m OD /min 5m ID)
Cable Tensioners	2 x 15T LCE
Cable Chutes	1 x 4m MBR Port / 1 x 5m MBR Stbd
Cableways Radius	5m all over
Bight deployment	5m MBR Quadrant c/w deployment system



Tank Capacities

Fuel (MGO)	abt. 2,850MT
Fresh Water	abt. 990MT (Production 55 T/D)
Ballast Water	abt. 7,900MT



Lifting Appliances

Offshore Crane	MacGregor, Knuckle-Boom SWL 250MT @ 9m for 600m WD with AHC and CT. Whip Hoist 25MT @35m with AHC, CT and Man Riding.
Auxiliary Cranes	1 x Heila, Knuckle-Boom with SWL 15MT @ 20m 1 x Palfinger, Knuckle-Boom with SWL 5MT @ 16m
Provision Cranes	2 x Heila, Folding Boom with SWL 1.55MT @ 14.8m



Personnel Transfer Systems

Boat Landing	Removable type
Helideck	14t M.T.O.W



ROV Arrangements

ROV Hangar	abt. 175m² for 2 x WROVs
ROV Moonpool	4.9m x 4.9m (in hangar)
ROV Side Doors	2 off 5m (W) x 10m(H)
ROV Workshop	1 off
Control rooms	Vessel-integrated

ROV Installed

Number	1
Owner / Operator	Helix Robotics Systems
Position	Aft, starboard side
Launching method	A-Frame
Type / Class	Work Class
Maker / Model	Triton XLX
Power	200HP
Depth Rating	3,000m
Special Tooling	tba



Accommodation

Total POB	106
Cabins	5 x Suites 47 x Single Cabins 13 x Double Cabins 7 x Twin Double Cabins
Dedicated smoker's lounge	
Mess Room	
3 x Saloons incl. one dedicated for Client use	
8 x Offices	
Conference Room	
Hospital	
Gymnasium	
Changing / Washing Room (separate for male / female)	
Duty Mess / Smokers Room	
Personnel Elevator 14 Persons	
Helicopter briefing room / lobby	



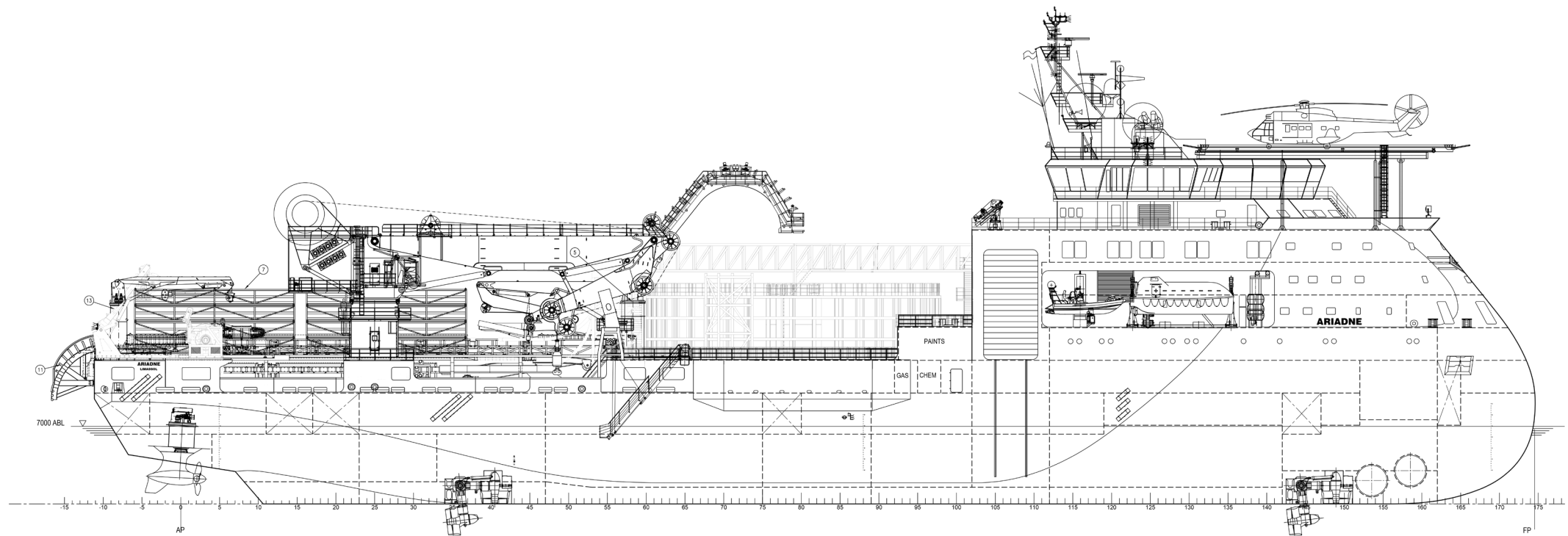
Communications

FBB500 Satellite Telephone
2 x Dual Ku Band V-Sat System w/ Land Lines & Starlink Satellite System
2 x Satellite TV Systems
GMDSS Plant as required for A3 Area



Life Saving Arrangements

Fast Rescue Craft	1 x for max 10 persons (S-Side)
Life Boats	2 x 106 Persons
Life Rafts	4 x 35 Persons, 2 x 39 Persons
Other LSA	As required by the SOLAS Convention





Name “Ariadne”

The Ariadne (/ˌæriˈædni/; in Greek: Ἀριάδνη) is named after the Cretan princess, daughter of King Minos of Crete, who according to Greek mythology, helped Theseus defeat the Minotaur by providing him with a sword and a ball of thread so that he could retrace his way out of the Minotaur's labyrinth.



Contact Information

Asso.subsea

Greece

1 Alieftikis Str., Elefsis 19200,
Greece

Contact

T (Direct) : (+30) 211.888.5100 T (Main) : (+30) 211.888.5180
E. central@assogroup.com

www.assogroup.com

Membership - Accreditations



BIMCO

Disclaimer

The specification details are illustrative for marketing purposes only. Actual equipment may be different as a result of product improvement or other reasons. Specific interface and performance information should be reconfirmed at time of order placement. Specifications are subject to change without any prior notification.

