

Artemis

Anchor Handling Tug & Supply Vessel

Features

- DP 1
- 132T Bollard Pull
- 500T Stern Roller
- Mezzanine / ROV Deck
- Accommodation for 30 persons





Artemis

The **Artemis** is a DP-1 Anchor Handling Tug & Supply Vessel, built in Husum, Germany in 1984.

She was acquired by the Asso Group in 2013, fully overhauled and upgraded in Chalkis Shipyards in Greece in 2014 (including Transfer of Class to ABS) and now operates mainly as a support vessel for the Group's CLV **Atalanti** on a worldwide basis offering, in addition, extensive supply, stand-by and auxiliary services on the various projects that she is involved in.

When not involved in support operations for the Group, she is employed on various offshore and subsea scopes of work including ROV operations, surveys etc. On occasion she is also chartered out as a pure towing vessel given her high Bollard Pull figures.

She holds a long track record on a variety of offshore projects and is being kept up to date with new equipment and careful maintenance to ensure zero down-time and highest possible performance on her employments

General information

IMO Number	8321591
Classification	ABS A1, Towing Vessel, Offshore Support Vessel, AMS, ACCU, DPS-1
Flag	Greece
Built	Germany, 1984
Length Overall	67.82 m
Breadth Moulded	15.60 m
Depth (Main Deck)	7.45 m
Draught (Max.)	6.45 m
Gross Tonnage	1,989
Deadweight	2,192 MT
Bollard Pull (Certified)	132 MT



Power & Propulsion

Main Engines	4 x Nohab F312B, each 3,328 BHP
Propulsion	2 x LIPS CPP in Kort Nozzles
Shaft Generators	2 x 1,600 kVA each
Aux. Generators	2 x Volvo D13B-E MG, 475 kVA each
Em'cy Generator	Scania DSI 1443A, 285 kVA
Bow Thrusters	2 x Tunnel, each 800 HP
Stern Thruster	1 x Tunnel, 800 HP

Performance

Max Speed (Free running)	abt. 15.0 kn
Consumption on Max Speed	abt. 44 T/D
Economic Speed (Free running)	abt. 10.0 kn
Consumption on Econ. Speed	abt. 11 T/D
Port Consumption	abt. 1.0 T/D



D.P. System

Maker	Marine Technologies LLC
Type	MT DP1
Sensors	1 x Gyro Compass 1 x MRU 1 x Wind Sensor
Position Reference Units	1 x DGPS with Sat. Corrections 1 x Cyscan Laser 1 x Gate Valve for HiPAP500 (not currently installed)

Survey Systems

EIVA NaviSuite	1 x NaviPac online
Network	Serial connections through all Stations
CCTV System	Full coverage of deck areas with surveillance & recording stations



Deck, Towing and A.H. arrangements

Main Deck Area	abt. 450 m ²
Mezzanine Deck	abt. 200 m ²
Stern Roller	SWL 500 MT
Shark Jaws	2 sets, retractable
Towing Pins	1 set, retractable
Towing eye	1 set, removable
Towing & A.H Winch	1 x Twin Drum with: 250 MT Pull @ 0~6 m/min 350 MT Brake Holding Fitted with 2 x chain gypsy wheels
Towing Wire	2 x 1,000m (76mm diam), one on each drum
Tugger Winches	2 x 15 MT Pull @ 16 m/min
Wire Storage	1 x Twin-drum storage winch
Deck Crane	1 x Fixed boom, 6MT @ 10m



Tank Capacities & Discharge rates

Fuel (MGO)	abt. 800 MT
Fresh Water	abt. 800 MT
Ballast / Drill Water	abt. 600 MT
Fuel Oil Pumps	2 x 150 m ³ /h @ 10 bar
B.W. Pumps	2 x 125 m ³ /h @ 9 bar
F.W Pumps	1 x 125 m ³ /h @ 9 bar



Life Saving Arr'ts

Fast Rescue Craft	1 off, with certified davit, port side
Life Rafts	4 x 25 person, throw-overboard type 1 x 15 person, throw-overboard type
Other LSA	As required by the SOLAS Convention



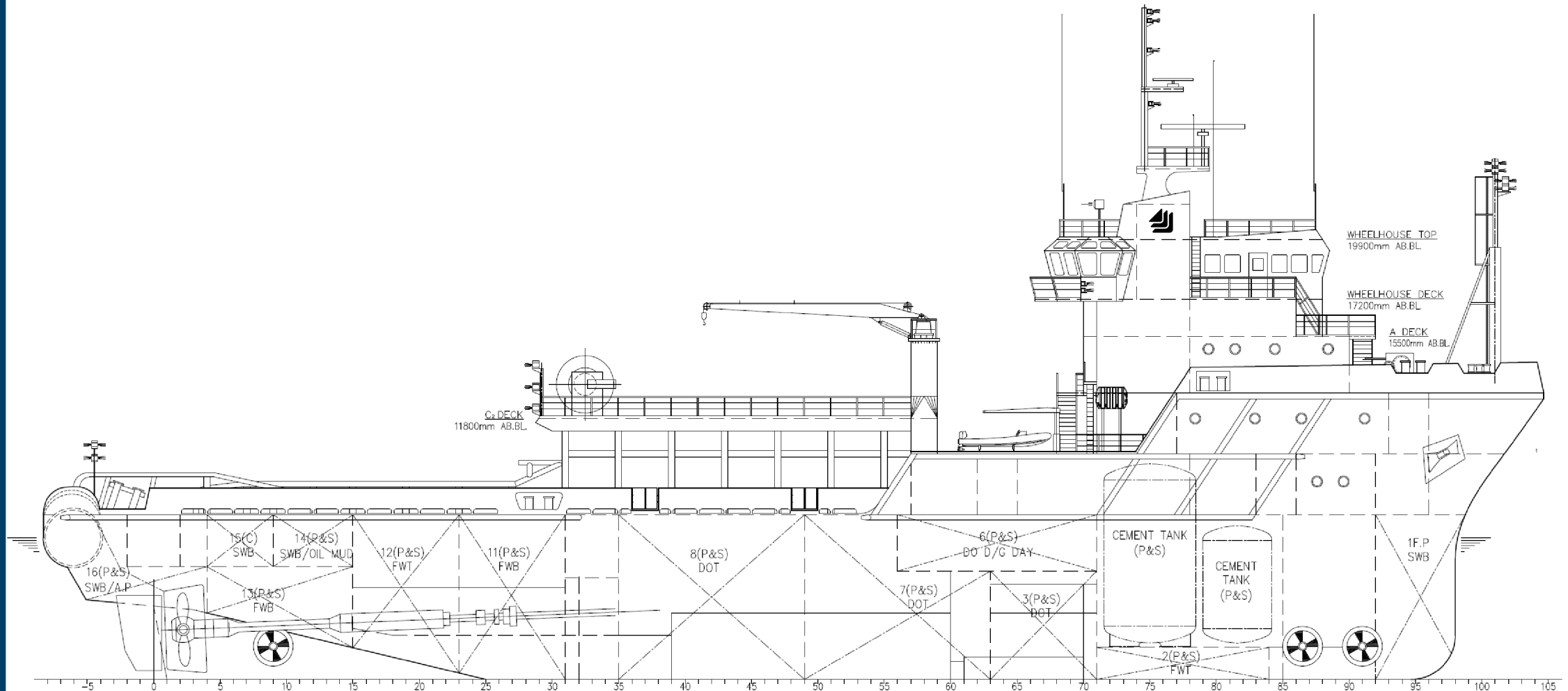
Accommodation

Total POB	30
Maximum PAX	12
Cabins	2 x Suites 2 x Single Cabins 13 x Double Cabins
Combined Mess Room & Saloon	
Hospital	



Communications

FBB250 Sat Phone
Ku Band V-Sat System
TV Satellite Antenna System
GMDSS Plant as required for A3 Area





Name “Artemis”

The Artemis (/ˈɑːrɪmɪs/; in Greek: Ἄρτεμις) is named after the Greek mythological goddess of the hunt, the wilderness, wild animals, the Moon and chastity. She was the daughter of Zeus and Leto, and the twin sister of Apollo. The goddess Diana is her Roman equivalent.



Contact Information

Asso.subsea

Greece

69 Okeanidon & 38 Charilaou
Trikoupi Str., Elefsina, 19200

Contact

T (Direct) : (+30) 211.888.5100 T (Main) : (+30) 211.888.5180
E. central@assogroup.com

www.assogroup.com

Membership - Accreditations



Disclaimer

The specification details are illustrative for marketing purposes only. Actual equipment may be different as a result of product improvement or other reasons. Specific interface and performance information should be reconfirmed at time of order placement. Specifications are subject to change without any prior notification.

