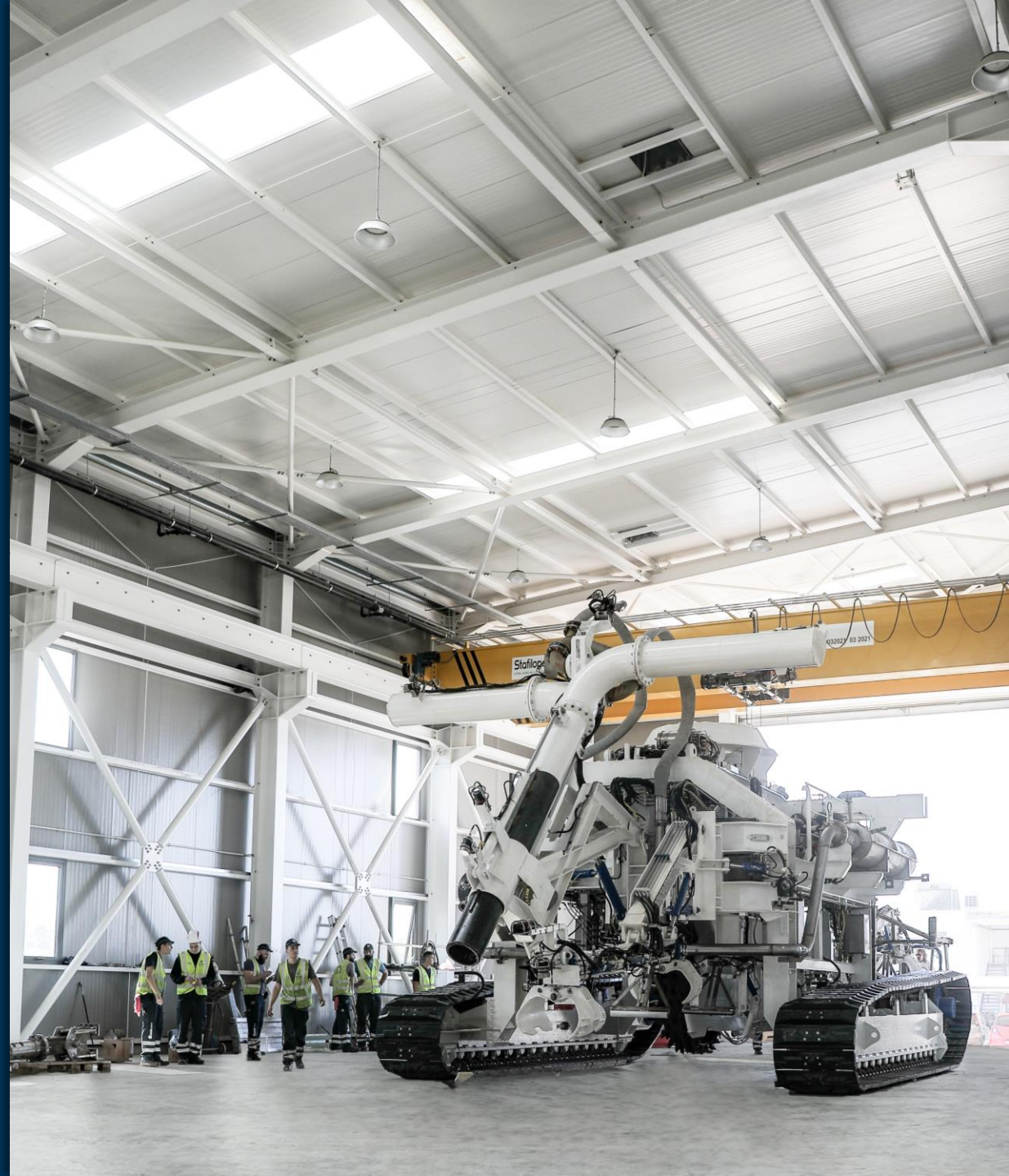


AssoTrencher IV Mk9

Mechanical Trencher



SPECIFICATIONS

Total installed Power	1.560kW
Water depth operating range	700m
Dimensions (core vehicle)	Length 12.9m Width 5.9m Height 4.7m
Weight in air	60T
Submerged weight	50T
Operations	Pre-Lay and Post Lay Burial capabilities in cutting (clockwise or anticlockwise)
Min. soil bearing capacity	34kPa
Speed on tracks	600m/h

HYDRAULIC SYSTEM

Power	2x260kW HPU
Max. track effort (soil depending)	Up to 30T

OTHER EQUIPMENT

Container spread	20ft Control container 3 x 20ft Workshops 2 x 20ft Spares
Supporting	Maintenance cutting tool trolley and platforms for safe access. 65T SWL A-Frame for Launch and Recovery

CHAIN CUTTING CONFIGURATION

Power	520kW (installed) 260kW (optional)
Max. roll & pitch	±15deg (Up to 15 deg with up to 8 deg combined)
Max soil strength capability	3MPa
Configuration	Cutting
Eductor performance	up to 20Bar
Max. Trench capability	3.0m
Max. product diameter	300mm
MBR of cable handling apparatus	3.0m
Dead-sub automatic release of product	

SENSOR EQUIPMENT

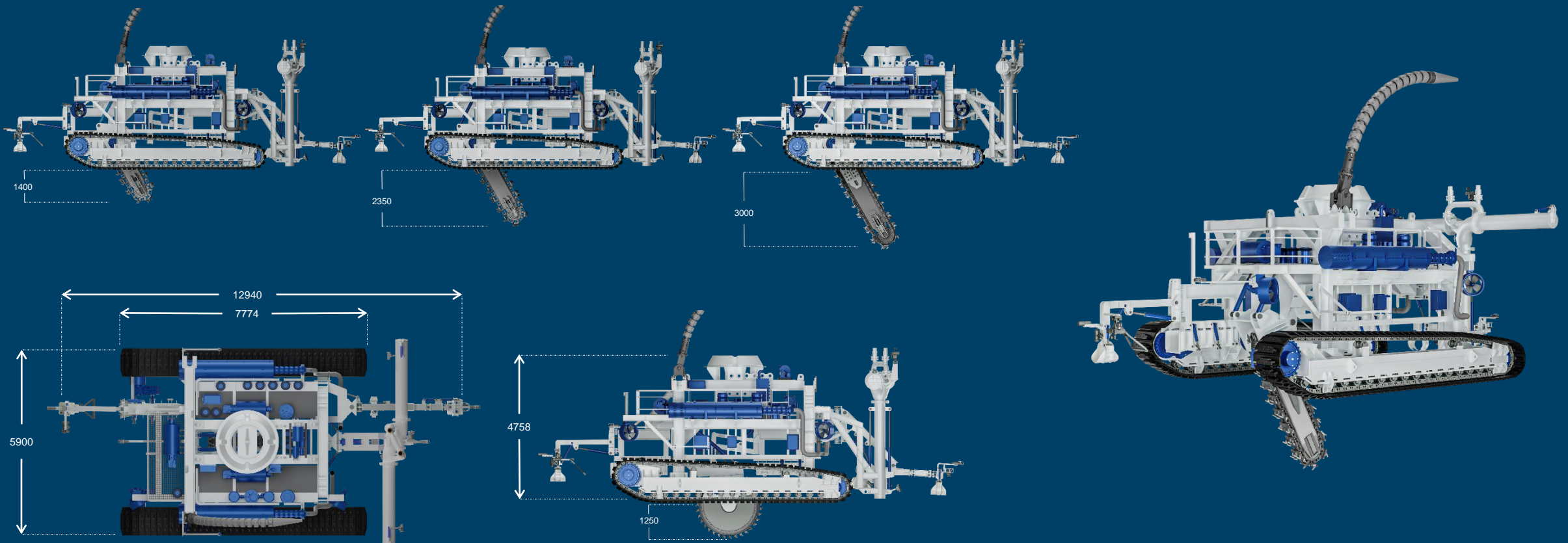
Up to 16 x low light cameras
Up to 16 x LED high intensity fully dimmable lights
Up to 7 x electric pan/tilt units
Up to 3 x imaging or profiling sonar
Up to 3 x Blueview 2D Multi-beam sonar
1 x Valeport mini IPS sensor
1x CDL TOGS/NAV FOG, Octans or Lodestar
Cable Tracker TSS 350/440 available
HCV 100 cable cutter available

WHEEL CUTTING CONFIGURATION

Power	520kW (installed) 260kW (optional)
Max. roll & pitch	±15deg (Up to 15 deg with up to 8 deg combined)
Max soil strength capability	50MPa
Configuration	Cutting
Eductor performance	up to 20Bar
Max. Trench capability	1.25m
Max. product diameter	300mm
MBR of cable handling apparatus	3.0m
Dead-sub automatic release of product	

SUBSEA ELECTRONICS

Electronic pod	2 pressure barrels
Depth rating	700m
Test pressure	SF2 x working pressure
Data transmission	F.O. multiplexer



Membership - Accreditations



Disclaimer

The specification details are illustrative for marketing purposes only. Actual equipment may be different as a result of product improvement or other reasons. Specific interface and performance information should be reconfirmed at time of order placement. Specifications are subject to change without any prior notification.

Contact Information

📍 1 Alieftikis Str., Elefsis 19200, Greece
 📞 Contact: T (Direct) : (+30) 211.888.5100 E. central@assogroup.com

